

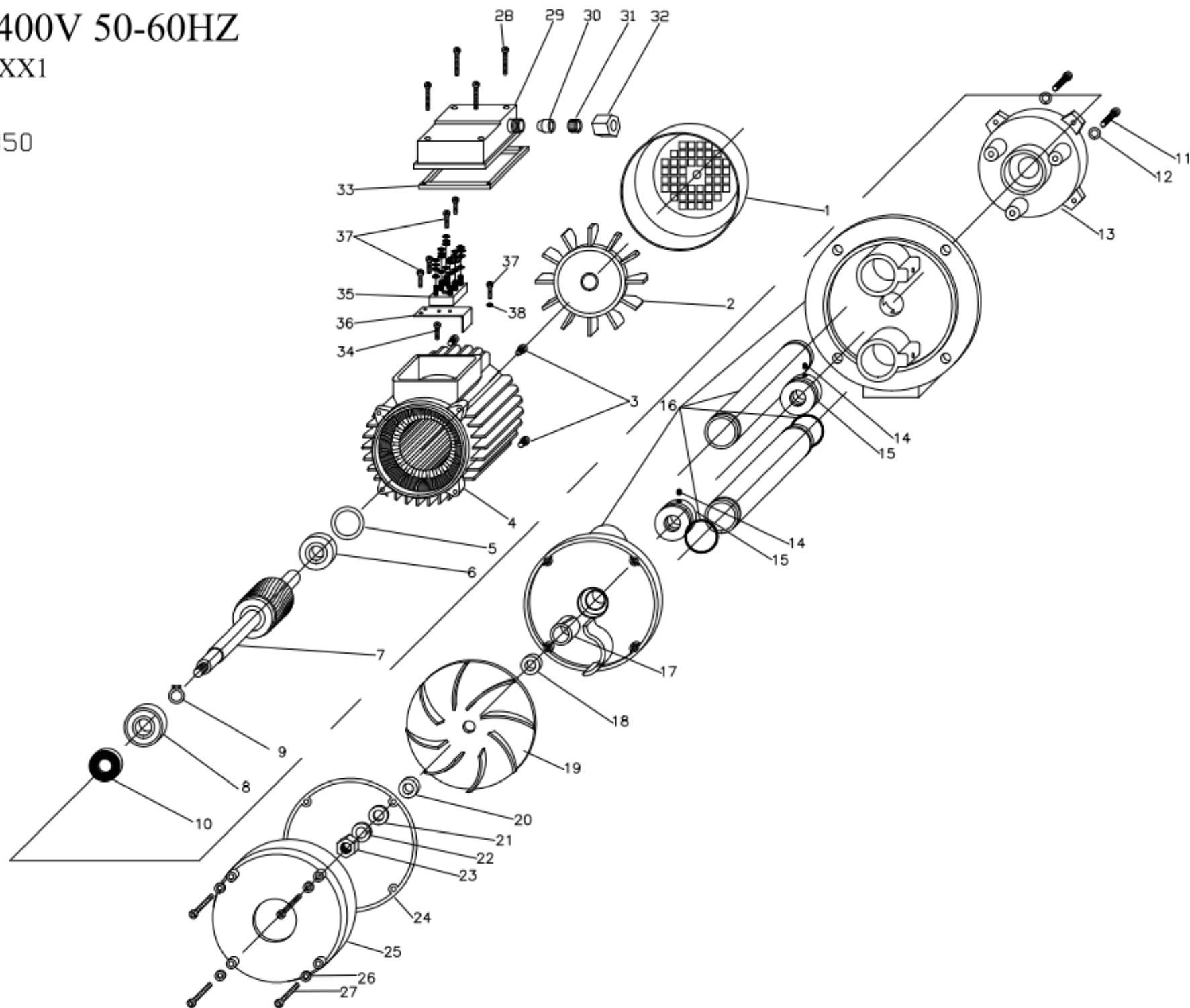
ZS 125 230-400V 50-60HZ

COD: IZS0125062XX1

PESCANTI:

220 - 270 - 350

440 - 550



RIF.	COD. ARTICOLO	DESCRIZIONE	QUANTITA'
1	24BCPM7100003	COPRI-VENTOLA M71 PP. NERO GRIGLIA CIRCOL	1
2	24BVEN0000003	VENTOLA MEC71 CON ANELLO	1
3	30005Z0000023	VITE TCEI 5 X20 C15B ZNC TT	4
4	M728000013151	STAT IN CAS.71 B5 BG CH 230/400/5 105CAT	1
5	216202C000001	ANELLO COMPENSATORE D.35B X 6202	1
6	2162020000002	CUSCINETTO 6202 2RS-C3WT 15/35/11 SKF	1
7	V711060000005	ALBERO (ZS 125 PESCANTE H220)	1
	V711060000006	ALBERO (ZS 125 PESCANTE H270)	1
	V711060000007	ALBERO (ZS 125 PESCANTE H350)	1
	V711060000008	ALBERO (ZS 125 PESCANTE H440)	1
	V711060000009	ALBERO (ZS 125 PESCANTE H550)	1
8	2163030000001	CUSCINETTO 6303 ZZ -C3 GRASSO ALTA TEMP.	1
9	21017F0000001	ANELLO 1400 EST. 17 FOSFATATO	1
10	34PAR17000006	PARAOLIO SC 17X35X7	1
11	30006Z0000020	VITE M6X40 ZNC TCEI CH.5	3
12	32006Z0000001	RONDELLA M 6 UNI 6592 ZNC DIN 125-A	3
13	50BSUPVLB0006	SUPPORTO M.71 VLB 80/65 VER.CAT.RUL.D.47	1
14	30004A0000013	GRANO M 4 X 5 A2 CE ESTR.PIANA DIN 913	2
15	32017BRG00001	RONDELLA ROMP 17 X30 H10 OT /PS	2
16	29BGA71000001	GAMBO ASS.M71 PESCANTE H220 C45	1
	29BGA71000002	GAMBO ASS.M71 PESCANTE H270 C45	1
	29BGA71000003	GAMBO ASS.M71 PESCANTE H350 C45	1
	29BGA71000004	GAMBO ASS.M71 PESCANTE H440 C45	1
	29BGA71000005	GAMBO ASS.M71 PESCANTE H550 C45	1
17	21BOCG0000002	BOCCOLA D 17X25 H30 GOMMA NBR	1
18	52BDISB000002	DISTANZIALE BASE GIRANTE ZS 14X20X5.3	1
19	56BIZS0000001	GIRANTE ZS 120 H 10 D.110 FORO"D" INOX	1
20	32022BPT00001	RONDELLA PREM 22 X14.1 H 2 OT	1
21	32010A0000001	RONDELLA M10 A2 DIN125-A	1
22	32010AGR00001	RONDELLA GROW M10 A2 DIN127-B	1
23	31010A0000001	DADO M10 H 8 A2 DIN 934	1
24	34GUA00000015	GUARN. TEST 139 X130,5 GUAMOTOR H0,5	1
25	50BCHIZS00002	CHIOCCIOLA MEC71 ZS VERN.NERA	1
26	32005AGR00001	RONDELLA GROW M 5 A2 DIN 127	4
27	30005A0000011	VITE M 5 X55 A2 TCCE DIN912	4
28	30003Z0000018	VITE 3,5X35 C15 ZNC TC+ PG DIN 7500-C	4
29	24ICOP7100001	COPERCHIO COND.LUNGO NERO M71 NYLON ROHS	1
30	34PAS00000006	PASSACAPO X SCATOLA COND. FORO D.9	1
31	24BFER0000004	FERMACAPO A GABBIA X COPRIMORS.	1
32	24BGHI0000002	GHIERA PRESSACAPO SCATOL.COND.NYLON ROHS	1
33	34COR00000001	CORNICE X COP. ALL 114X76X1,5 EPDM	1
34	30003Z0000006	VITE 3,5X13 C15 ZNC TC+ AUTOF.DIN7981	1
35	11MORS0000005	MORSETTIERA 40X25 6PERNI (+6 DADI)	1
36	00SUP00000003	SUPPORTO PORTA MORSETTIERA LAM.ZINCATA	1
37	30003Z0000005	VITE 3,5X10 C15 ZNC TC+ DIN 7500-C	5
38	32004ZDT00001	RONDELLA DENT.M 4 DIN 6798 A ZNC	1