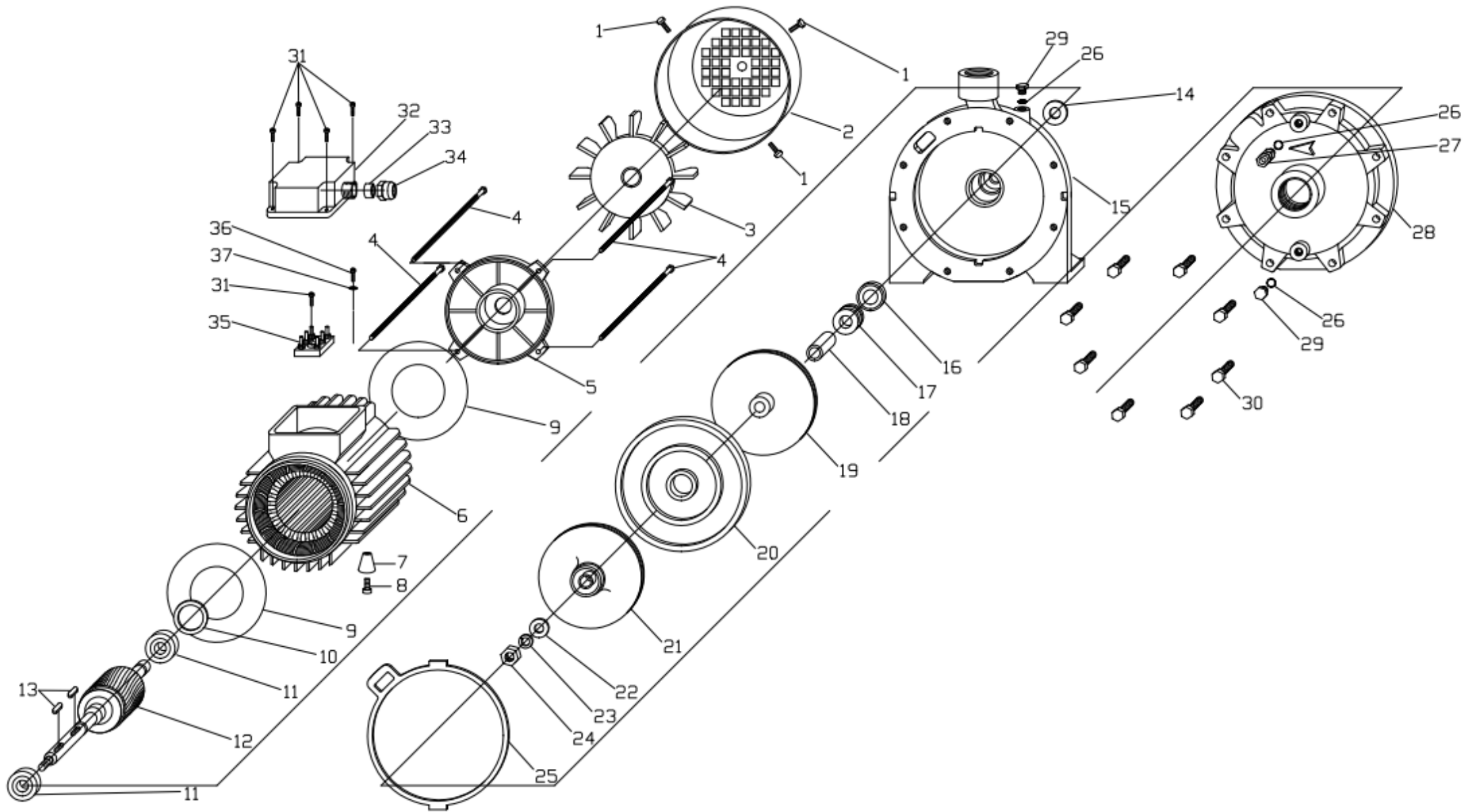


ZH 300 230-400V 50HZ

COD: BZH0300060B01



RIF.	COD. ARTICOLO	DESCRIZIONE	QUANTITA'
1	30003Z0000020	VITE M 3,5X 9,5 C15 ZNB TC+ AUTOFILET.	4
2	44BCOP8000001	COPRIVENTOLA MEC80 LAM.LUCIDA VP/4F	1
3	24BVEN0000005	VENTOLA MEC80 CON ANELLO FB	1
4	33005G0000005	TIRANTE M 5X152 4,8 GR	4
5	50BSCU8000001	SCUDO M80 B3 NPF LAV.	1
6	M822000013241	STAT IN CASSA 80 B5 AP 230/400/50 120	1
7	00PIE00000011	PIEDINO X MOTORE MEC71 H31 CON FORO	1
8	30005Z0000029	VITE 5,5X14 C15B ZNC TC+ AUTOFILETT.	1
9	34ISO00000002	DISCO ISOL. MYLAR 125X67 "ZM400"	2
10	216204C000001	ANELLO COMPENSATORE D.47 X 6204	1
11	2162040000004	CUSCINETTO 6204 2RS 20X47X14	2
12	H801210000003	ALBERO E ROTORE ZH300 (12001)	1
13	30L0400000001	LINGUETTA 4X4X10 INOX DIN 6885-A	2
14	34ROM00000001	ROMPIGOCCIA 30X14 H2,5 NBR	1
15	54BTZH0000001	TESTATA GHISA ZH 150/300 LAV.28018/L PR	1
16	3516F00000002	TENUTA F. 26,9X16 X7 BTPFL BP	1
17	3515R00000002	TENUTA R. 15 BTPRFN XPGF	1
18	52BDISP000005	DISTANZIALE PREM.ZB 17.5X15 17002	1
19	56BBZH0000001	GIRANTE H3 D.160 53009/L DX L. OTT	1
20	54BDISZH00001	DISCO INTERM.ZH150-300 37000/L GHISA	1
21	56BBZH0000002	GIRANTE H3 D.160 53008/L SX L. OTT	1
22	32010A0000001	RONDELLA M10 A2 DIN125-A	1
23	32010AGR00001	RONDELLA GROW M10 A2 DIN127-B	1
24	31010A0000001	DADO M10 H 8 A2 DIN 934	1
25	34GUA00000021	GUARN. PIANA 185X167.5 ZH 0,5 BETAFLEX77	1
26	32010L0000001	RONDELLA 10 X16 H 1,5 AL	3
27	60VAL00000002	VALVOLA 1/8G DI SFIATO ZH OTTONE	1
28	54BTZH0000002	TESTATA GHISA ZH 150/300 LAV.28017/L AS	1
29	31TAP00000003	TAPPO 1/8 GAS E.14 OT NICHELATI BIANCHI	2
30	30008Z0000012	VITE M 8 X40 8.8 ZNC TE DIN 933	8
31	30003Z0000006	VITE 3,5X13 C15 ZNC TC+ AUTOF.DIN7981	5
32	24BCOP8000001	COPRI-MORSETTIERA M80 CASSA CAME	1
33	34GUA00000014	GUARN. CONICA M80/100 SAVIPLAST D. 9 M20	1
34	24BGHI0000014	GHIERA FILETTATA PG 13,5 SCATOLA M80	1
35	11MORS0000005	MORSETTIERA 40X25 6PERNI (+6DADI)	1
36	30003Z0000005	VITE 3,5X10 C15 ZNC TC+ DIN 7500-C	1
37	32004ZDT00001	RONDELLA DENT.M 4 DIN 6798 ZNC	1