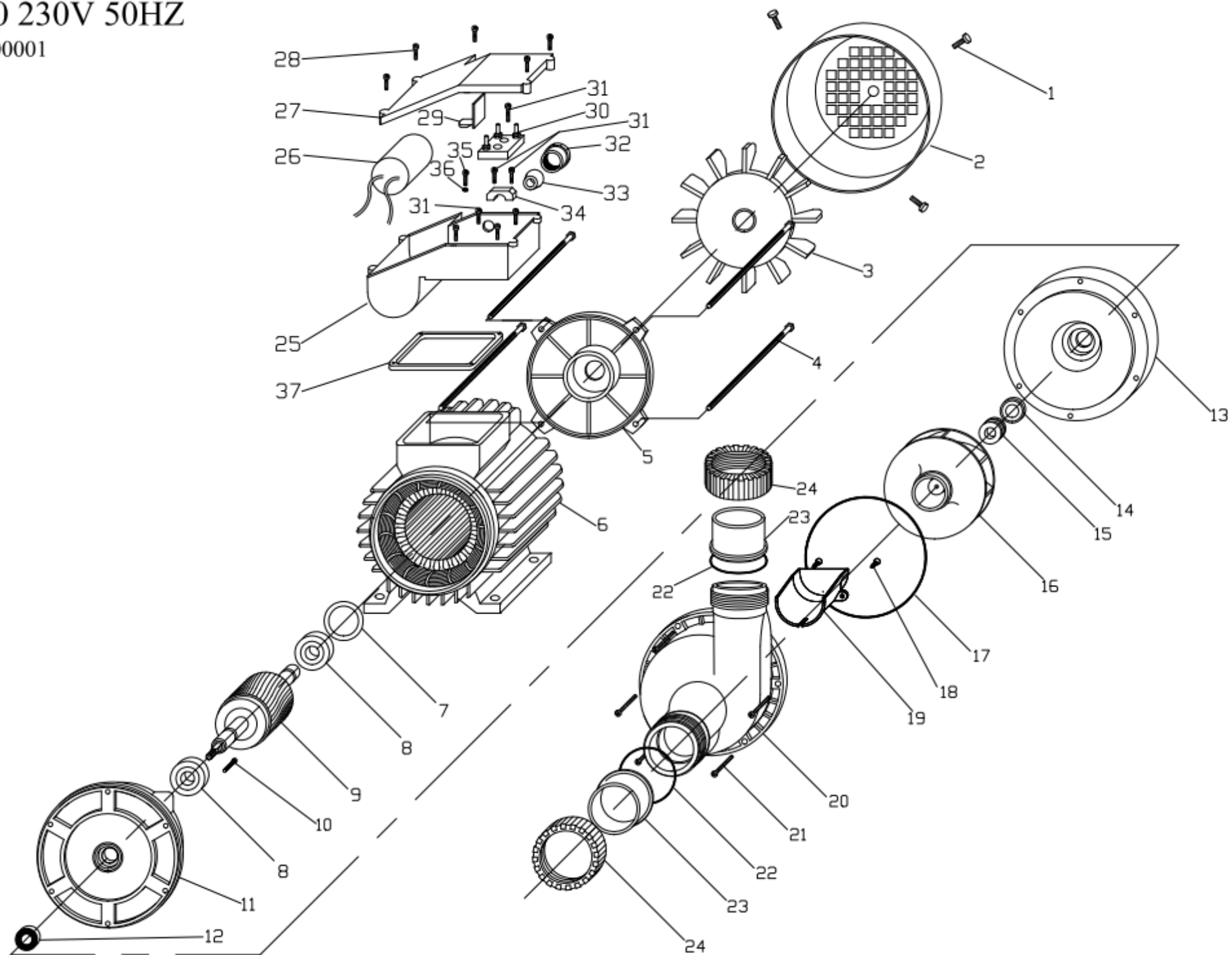


VENUS 3000 230V 50HZ

COD: WTOR300000001



RIF.	COD. ARTICOLO	DESCRIZIONE	QUANTITA'
1	30003Z0000020	VITE M 3,5X 9,5 C15 ZNB TC+ AUTOFILET.	4
2	44BCOP8000003	COPRIVENTOLA M80 LAM.NERO CATAF.	1
3	24BVEN0000005	VENTOLA MEC80 CON ANELLO FB	1
4	33005Z0000007	TIRANTE M 5X152 ZNC TE	4
5	50BSCU8000001	SCUDO M80 B3 NPF LAV.	1
6	M820000005101	STAT IN CASSA 80 B3 AP 230/50CT.A 100	1
7	216204C000001	ANELLO COMPENSATORE D.47 X 6204	1
8	2162040000004	CUSCINETTO 6204 2RS 20X47X14	2
9	H801000000007	ALBERO E ROTORE VENUS 3000 H100	1
10	30004Z0000015	VITE 4,5X50 ZNC TC+PZ (TRUCIOL.)	1
11	50WSUPJZ00003	SUPPORTO MEC 80 "JZ" CUS. 47 LAVORATO	1
12	34PAR15000004	PARAOILIO SC 15X24X5 M.INOX DICHTOMATIK	1
13	24WFLAT0000001	FLANGIA "TORNADO" NERA PP	1
14	3516F00000004	TENUTA F. 29,5X16 X8 PF C XP	1
15	3516R00000002	TENUTA R. 16R PR/AR BPFF IDROM	1
16	56WNTOR0000006	GIRANTE TOR.20003000H13 D108 NORYL	1
17	3412000000003	OR 120,24X3,53 NBR 50 4475	1
18	30002A0000002	VITE 2,9X 9,5 A2 TSP+ DIN 7982	2
19	24WINST0000001	INSERTO ASPIRAZIONE TESTATA TORNADO	1
20	24WTEST0000001	TESTATA TORNADO NERA IN PP	1
21	30005Z0000024	VITE 5 X50 C15B ZNC TC TORX	5
22	3404700000001	OR 47,63X3,53 NBR 70 152	2
23	60BODJ0000007	BOCCHETTONE EVOLUX 50 DRITTO A37	2
24	24BGHI0000008	GHIERA BOCCHETTONE EVOLUX (EX JZ)	2
25	24BBAS0000001	BASE G4 MEC 80/100 SAVIPLAST M20	1
26	10CON00000007	CONDENSATORE MF 30 VL 450 CON OCCH.	1
27	24BCOP8000002	COPERCHIO CONDENSATORE M80 G4 M20	1
28	30003Z0000010	VITE 3,5X16 ZNC TCB+AC AUTOFIL.DIN7981	5
29	24BSTA0000001	STAFFA FERMACONDENS.M63/71/80 SAV.STA.00	1
30	11MORS0000001	MORSETTIERA 40X25 3P. + DADI	1
31	30003Z0000006	VITE 3,5X13 C15 ZNC TC+ AUTOF.DIN7981	7
32	24BGHI0000001	GHIERA FILETTATA M20X1,5 SCATOLA MEC 80	1
33	34GUA00000014	GUARN. CONICA M80/100 SAVIPLAST D. 9 M20	1
34	24BFER0000002	FERMACAVO MEC 80/100	1
35	30003Z0000005	VITE 3,5X10 C15 ZNC TC+ DIN 7500-C	1
36	32004ZDT00001	RONDELLA DENT.M 4 DIN 6798 A ZNC	1
37	34COR00000008	CORNICE X COP. M80 82X82 EPDM	1