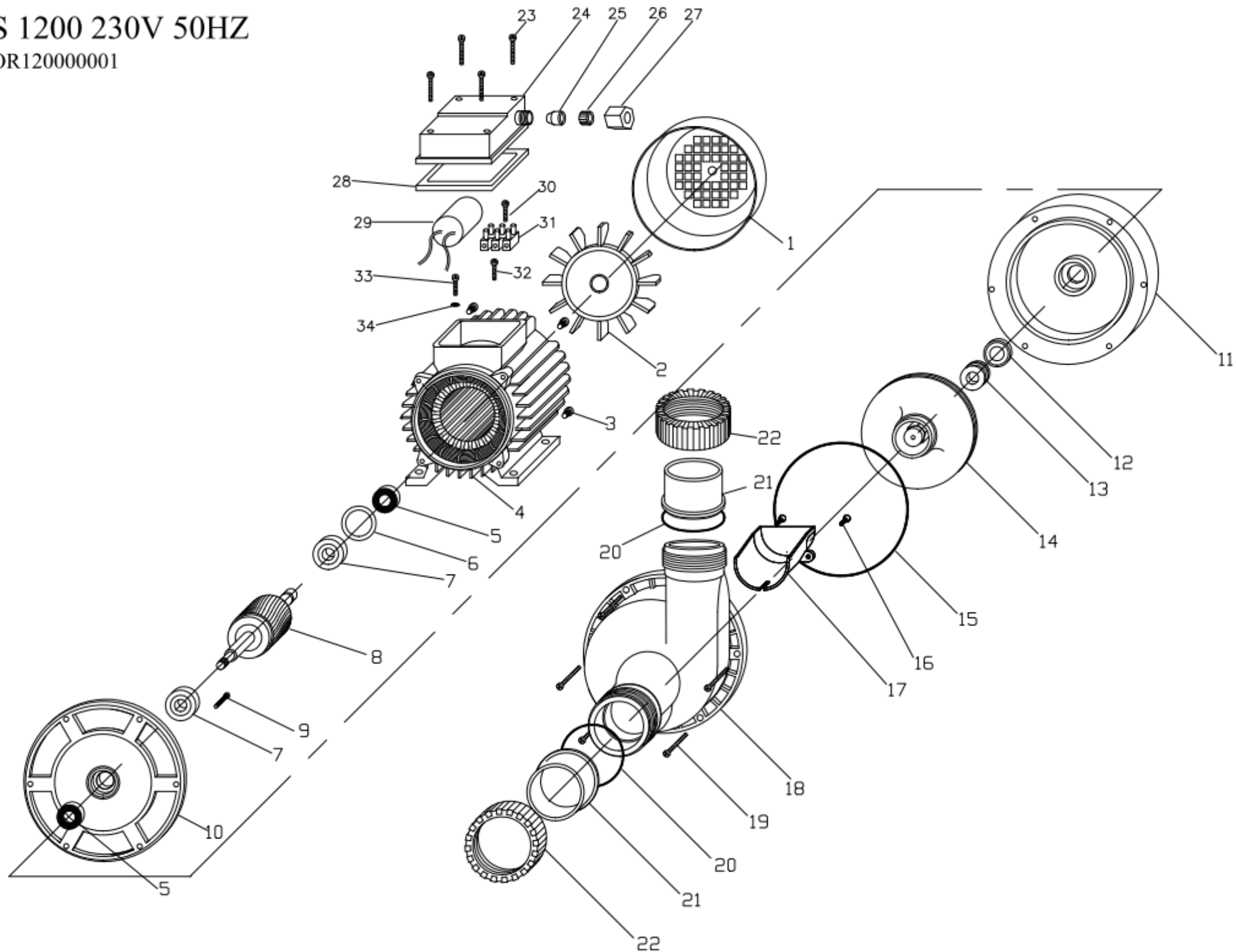


VENUS 1200 230V 50HZ

COD: WTOR120000001



RIF.	COD. ARTICOLO	DESCRIZIONE	QUANTITA'
1	24BCPM7100003	COPRI-VENTOLA M71 PP NERO GRIGLIA CIRCOL	1
2	24BVEN0000003	VENTOLA MEC71 CON ANELLO	1
3	30005Z0000023	VITE TCEI 5X 20 C15B ZNC TT	4
4	M707000005701	STAT IN CASSA 71 B3 BG CH 230/50CT.A 70	1
5	34PAR15000004	PARAOILIO SC 15X24X5 M.INOX DICHTOMATIK	2
6	216202C000001	ANELLO COMPENSATORE D.35B X 6202	1
7	2162020000006	CUSCINETTO 6202 2RS	2
8	H710700000023	ALBERO E ROTORE EVOLUX 1200 H70	1
9	30004Z0000015	VITE 4,5X50 ZNC TC+PZ (TRUCIOL.)	1
10	50WSUPJZ00002	SUPPORTO MEC71 "JZ" CUS.35 LAVORATO	1
11	24WFLAT000001	FLANGIA "TORNADO" NERA PP	1
12	3516F00000004	TENUTA F. 29,5X16 X8 PF C XP	1
13	3516R00000002	TENUTA R. 16R PR/AR BPFIDROM	1
14	56WNTOR000004	GIRANTE TORNADO 1200 H8 D108 NORYL	1
15	3412000000003	OR 120,24X3,53 NBR 50 4475	1
16	30002A0000002	VITE 2,9X 9,5 A2 TSP+ DIN 7982	2
17	24WINST000001	INSERTO ASPIRAZIONE TESTATA TORNADO	1
18	24WTEST000001	TESTATA TORNADO NERA IN PP	1
19	30005Z0000024	VITE 5 X50 C15B ZNC TC TORX	5
20	3404700000001	OR 47,63X3,53 NBR 70 152	2
21	60BODJ0000007	BOCCHETTONE EVOLUX 50 DRITTO A37	2
22	24BGHI0000008	GHIERA BOCCHETTONE EVOLUX (EX JZ)	2
23	30003Z0000018	VITE 3,5X35 C15 ZNC TC+ PG DIN 7500-C	4
24	24ICOP7100001	COPERCHIO COND.LUNGO NERO M71 NYLON ROHS	1
25	34PAS00000006	PASSACAVO X SCATOLA COND. FORO D.9	1
26	24BFER0000004	FERMACAVO A GABBIA X COPRIMORS.	1
27	24BGHI0000002	GHIERA PRESSACAVO SCATOL.COND.NYLON ROHS	1
28	34COR00000001	CORNICE X COP. ALL 114X76X1,5 EPDM	1
29	10CON00000004	CONDENSATORE MF 16 VL450	1
30	30002Z0000002	VITE 2,9X16 C15 ZNC AUTOFILET.TC+UNI6954	1
31	11MAM00000001	MAMMUT 3X2 OK433-FV/LP 41378.17	1
32	30003Z0000006	VITE 3,5X13 C15 ZNC TC+ AUTOF.DIN7981	1
33	30003Z0000005	VITE 3,5X10 C15 ZNC TC+ DIN 7500-C	1
34	32004ZDT00001	RONDELLA DENT.M 4 DIN 6798 A ZNC	1