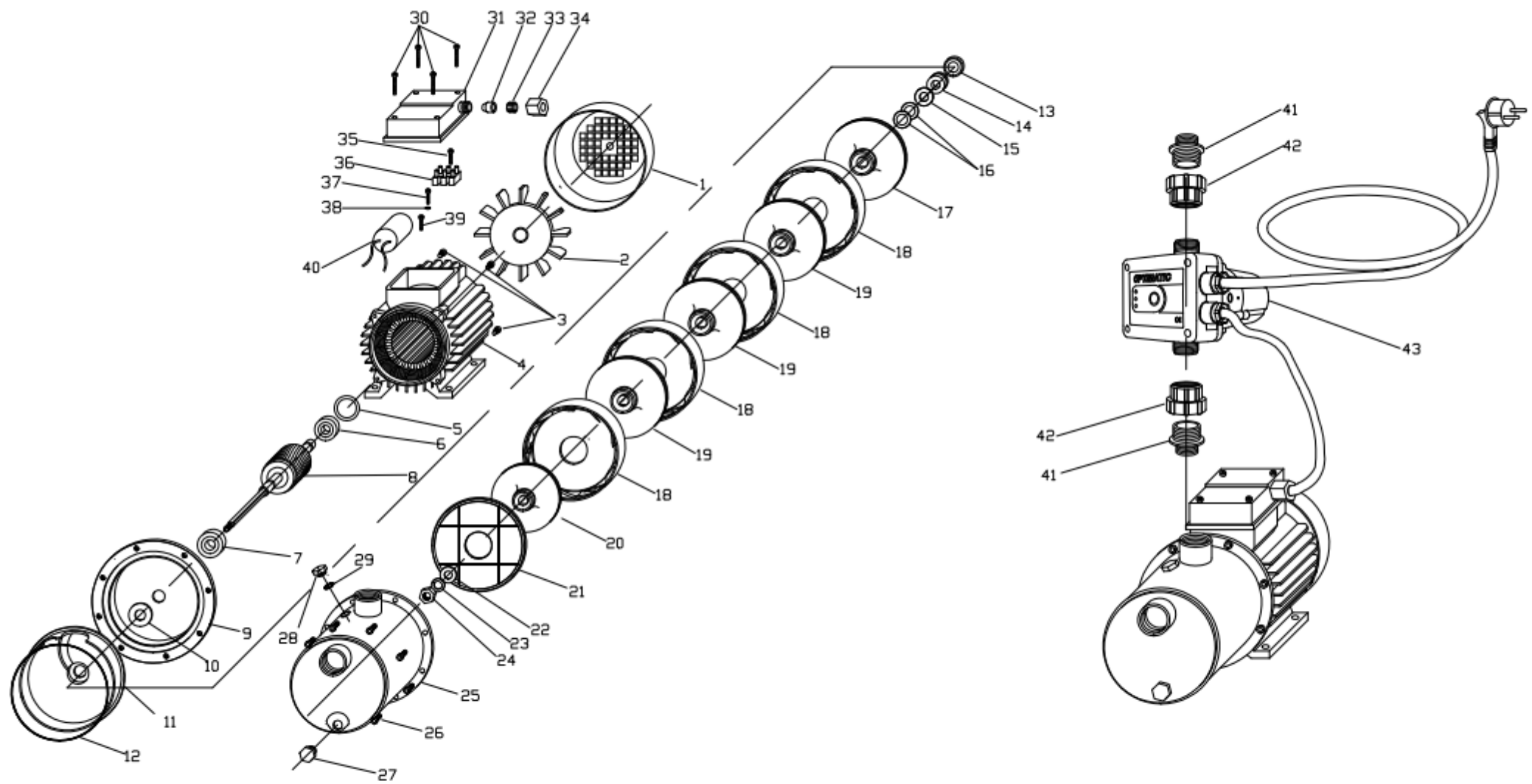


POWERTEC 105 230V 50HZ

COD: BMCH15F000B01



RIF.	COD. ARTICOLO	DESCRIZIONE	QUANTITA'
1	24BCPM7100003	COPRI-VENTOLA M71 PP NERO GRIGLIA CIRCOL	1
2	24BVEN0000003	VENTOLA MEC71 CON ANELLO	1
3	30005Z0000023	VITE 5X20 TCEI 5 X20 C15B ZNC TT	4
4	M709000005701	STAT IN CASSA 71 B3 BG PA CH 230/50CT.A	1
5	216202C000001	ANELLO COMPENSATORE D.35B X 6202	1
6	2162020000002	CUSCINETTO 6202 2RS-C3WT 15/35/11 SKF	1
7	2163020000002	CUSCINETTO 6302 2RS-C3 15/42/13	1
8	H710700000013	ALBERO E ROTORE MC 105	1
9	50BSUPMC00004	SUPPORTO M.71 MC-MCX LAV. CUSC.D.42 ALL.	1
10	34ROM00000001	ROMPIGOCCIA 30X14 H2,5 NBR	1
11	24BFLABM00001	FLANGIA DI BASE MC-MCX P.B.T.	1
12	3412000000002	OR 120,24X3,53 NBR 70 4475	1
13	3516F00000004	TENUTA F. 29,5X16 X8 PF C XP	1
14	3515R00000004	TENUTA R.15X32X13 PR/PN BPFF-F MOLLA L	1
15	32030BPT00001	RONDELLA PREM 30 X14 H 4,5 OT JET-HF	1
16	52BDISG000007	DISTANZIALE GIRANTE X MC75-105 20X14.1H1	2
17	56BNMCN000003	GIRAN.BAS.MC75GI3027 F14 H1,8 D105 NORYL	1
18	24ADIFIN00001	DIFFUSORE INTERMEDIO MC-MCS PBT DI3003	4
19	56BNMCN000002	GIRAN.INT.MC75GI3026 F14 H1,8 D105 NORYL	3
20	56BNMCN000009	GIRAN.INT.MC75 TORN. F14 H1,8 D.88 NORYL	1
21	24ACOPD000001	COPERCHIO FINALE MCS-MC PBT	1
22	32010A0000001	RONDELLA M10 A2 DIN125-A	1
23	32010AGR00001	RONDELLA GROW M10 A2 DIN127-B	1
24	31010A0000001	DADO M10 H 8 A2 DIN 934	1
25	44BTMC0000003	TESTATA MC-MCX 12/10 5GIR.ASP.1" LUC.	1
26	30006Z0000019	VITE M6X16 C15B ZNC TCEI CH.5	8
27	31TAP00000006	TAPPO 1/4 GAS E.17 OT NIC SEDE OR+OR H13	1
28	31TAP00000008	TAPPO 1/4 GAS E.17 OT NIC+ SEDE OR H 9	1
29	3401200000001	OR 12,42X1,78 NBR 70 2050	1
30	30003Z0000018	VITE 3,5X35 C15 ZNC TC+ PG DIN 7500-C	4
31	24ICOP7100001	COPERCHIO COND.LUNGO NERO M71 NYLON ROHS	1
32	34PAS00000006	PASSACAPO X SCATOLA COND. FORO D.9	1
33	24BFER0000004	FERMACAPO A GABBIA X COPRIMORS.	1
34	24BGHI0000002	GHIERA PRESSACAPO SCATOL.COND.NYLON ROHS	1
35	30002Z0000002	VITE 2,9X16 C15 ZNC AUTOFILET.TC+UNI6954	1
36	11MAM00000001	MAMMUT 3X2 (FIBRA VETRO 3 POLI)C/LAMELLA	1
37	30003Z0000005	VITE 3,5X10 C15 ZNC TC+ DIN 7500-C	1
38	32004ZDT00001	RONDELLA DENT.M 4 DIN 6798 A ZNC	1
39	30003Z0000006	VITE 3,5X13 C15 ZNC TC+ AUTOF.DIN7981	1
40	10CON00000025	CONDENSATORE MF 16 VL450 RPC-3	1
41	60NIPP0000008	RACCORDO DRITTO 1"M X 1"1/4M PLASTICA	2
42	60VALNP0000001	VALVOLA 1" NON RIT. PLASTICA X MCS	2
43	60OPTRMC00001	PRESSOFUS.OPTIMATIC RMC 10A 1,5KW(2HP)	1