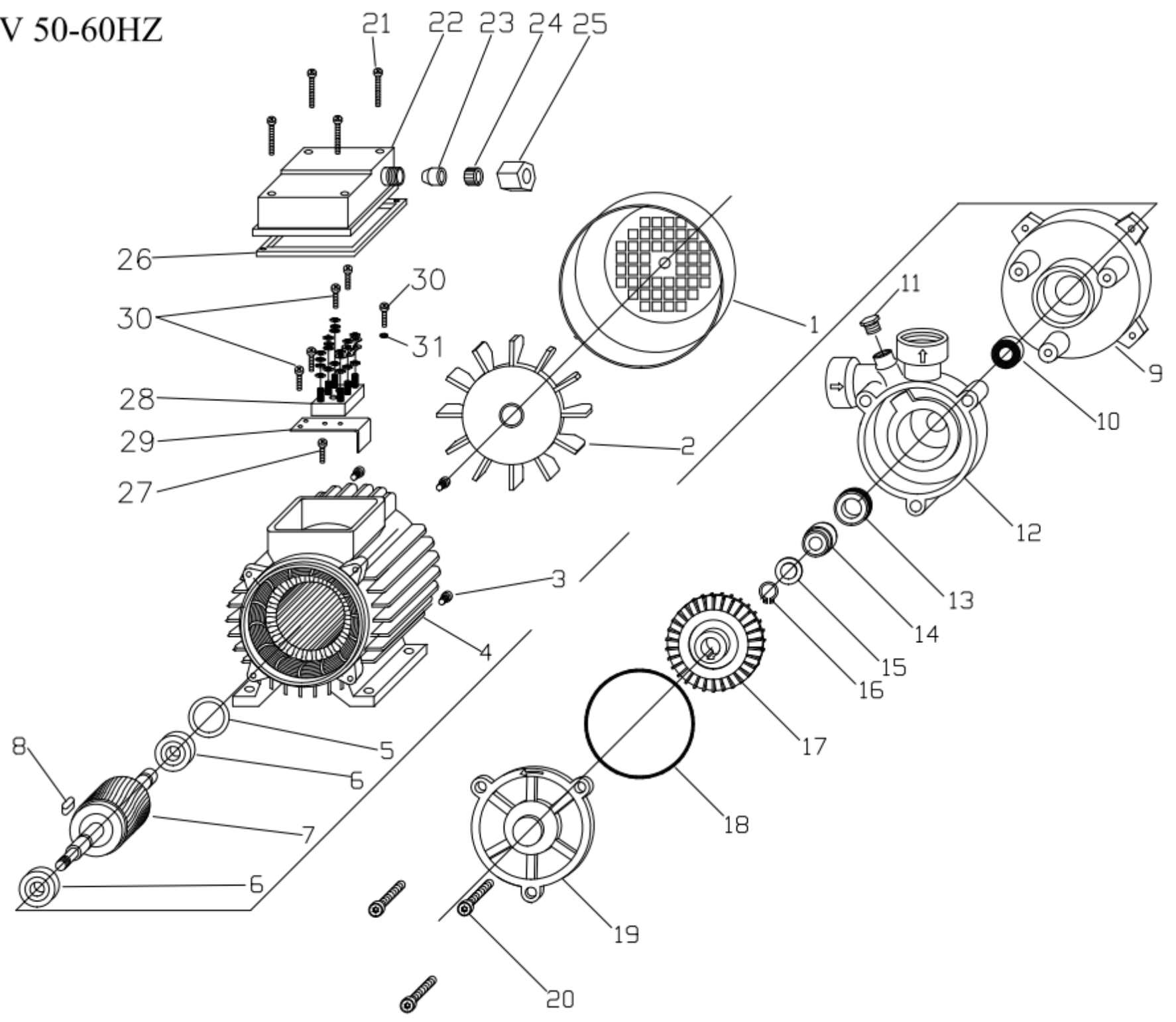


# PB 100 230-400V 50-60HZ

COD: BPB0100062001



RIF.	COD. ARTICOLO	DESCRIZIONE	QUANTITA'
1	24BCPM7100003	COPRI-VENTOLA M71 PP NERO GRIGLIA CIRCOL	1
2	24BVEN0000003	VENTOLA MEC71 CON ANELLO	1
3	30005Z0000023	VITE TCEI 5 X20 C15B ZNC TT	4
4	M732000013901	STAT IN CASSA 71 B3 BG PN CH230/400/50 9	1
5	216202C000001	ANELLO COMPENSATORE D.35B X 6202	1
6	2162020000006	CUSCINETTO 6202 2RS	2
7	H710900000001	ALBERO E ROTORE VLB 100/65-PB100	1
8	30L0400000001	LINGUETTA 4X4X10 INOX DIN 6885-A	1
9	50ISUPVLB0004	SUPPORTO MEC 71 VLB 80/65 D.35 V.N. RULL	1
10	34PAR12000004	PARAOLIO SC 12X24X4,5 M.INOX DICHTOMATIK	1
11	31TAP00000004	TAPPO 3/8 GAS E.17 OT H8	1
12	52BTVLB000001	TESTATA OTT. VLB80/65 - PB 100 LAV.	1
13	3512F00000006	TENUTA F. 26 X12 H8	1
14	3512R00000005	TENUTA R. 12 PR/AR BPFF	1
15	32012B0000001	RONDELLA 12,5X20 H 1 OT	1
16	21012A0000001	ANELLO 1400 EST. 12 INOX S/S DIN 471	1
17	56BBV00000007	GIRANTE PB100 D. 71 L. OTT	1
18	3407500000001	OR 75,00X2 NBR 70	1
19	52BCOPVLB0001	COPERCHIO OTT. VLB80/65 LAV.	1
20	30006Z0000026	VITE ZNC M6X45 TE FLAN. AUTOMASCH.	3
21	30003Z0000018	VITE 3,5X35 C15 ZNC TC+ PG DIN 7500-C	4
22	24ICOP7100001	COPERCHIO COND.LUNGO NERO M71 NYLON ROHS	1
23	34PAS00000006	PASSACAVO X SCATOLA COND. FORO D.9	1
24	24BFER0000004	FERMACAVO A GABBIA X COPRIMORS.	1
25	24BGHI0000002	GHIERA PRESSACAVO SCATOL.COND.NYLON ROHS	1
26	34COR00000001	CORNICE X COP. ALL 114X76X1,5 EPDM	1
27	30003Z0000006	VITE 3,5X13 C15 ZNC TC+ AUTOF.DIN7981	1
28	11MORS0000005	MORSETTIERA 40X25 6PERNI (+6DADI)	1
29	00SUP00000003	SUPPORTO PORTA MORSETTIERA LAM.ZINCATA	1
30	30003Z0000005	VITE 3,5X10 C15 ZNC TC+ DIN 7500-C	5
31	32004ZDT00001	RONDELLA DENT.M 4 DIN 6798 A ZNC	1